

Eddy covariance measurements of CO₂ and CH₄ fluxes over a boreal river

Plymouth, UK, 18.05.2022

Aki Vähä, T. Vesala, S. Guseva, A. Lindroth, A. Lorke, S. MacIntyre, A. Ojala, I. Mammarella



UNIVERSITY OF HELSINKI

INAR
INSTITUTE FOR ATMOSPHERIC AND
EARTH SYSTEM RESEARCH

Contents

1. Greenhouse gas fluxes over rivers and the KITEX campaign
2. Eddy covariance measurements
3. Fluxes and their temporal variability
4. Gas transfer velocity and its drivers

Background: Greenhouse gas fluxes over rivers

- Considerable outgassing of carbon from rivers, not just passive carbon-transporting pipes
- Unknowns:
 - Magnitude of fluxes
 - Drivers of fluxes in different-sized rivers
 - Nighttime fluxes
- Lack of previous EC measurements: only one study of a boreal river (Huotari et al. 2013)
- Goal: to measure and quantify greenhouse gas fluxes and the physical processes that control them on the River Kitinen in northern Finland
- Four-month campaign in 2018

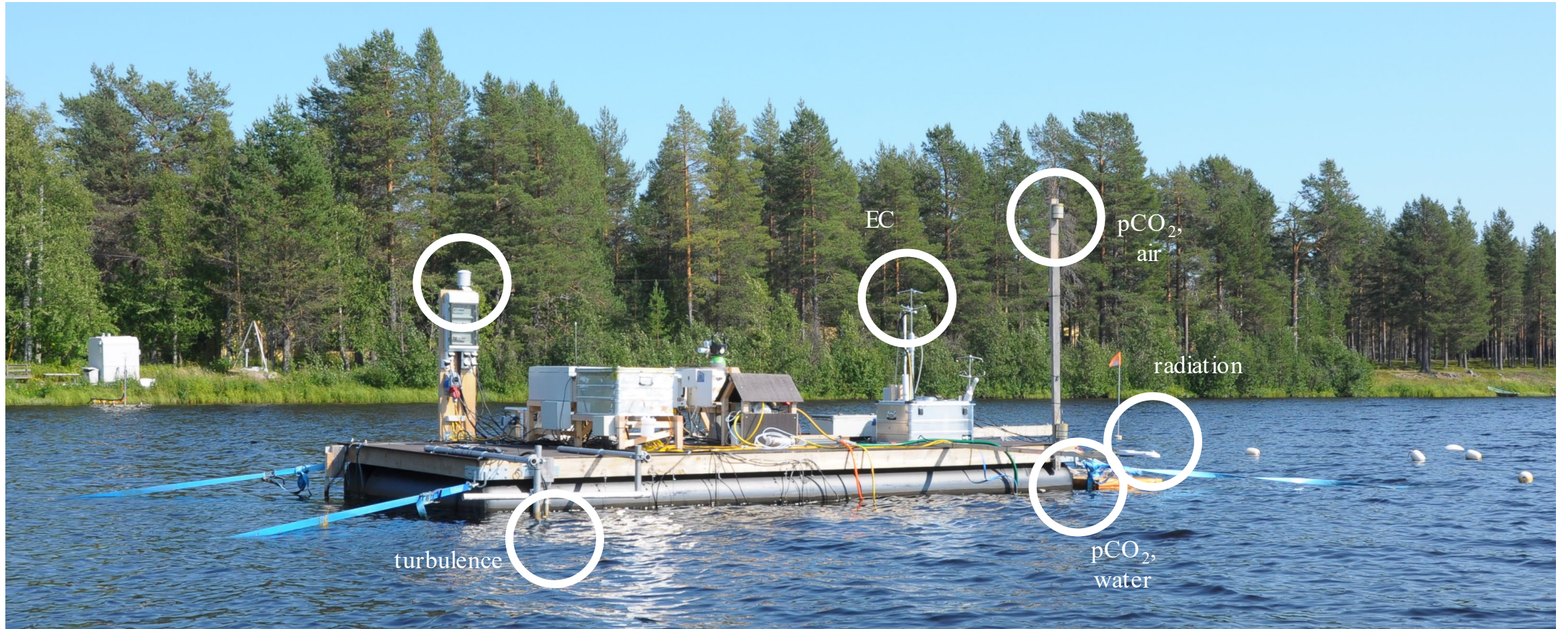
Site of measurements



Site of measurements

- Köppen climate classification Dfc (northern boreal)
- 67.37 N, 26.62 E, 173 m above sea level
- River Kitinen
 - length 235 km
 - catchment area 7 672 km²
 - width at the experiment site 180 m
 - mean yearly discharge (10 km downstream) 103 m³/s
- Heavily regulated river: seven hydropower plants, power plant 11 km both up and downstream from the experiment site
- Water current completely controlled by the power plants

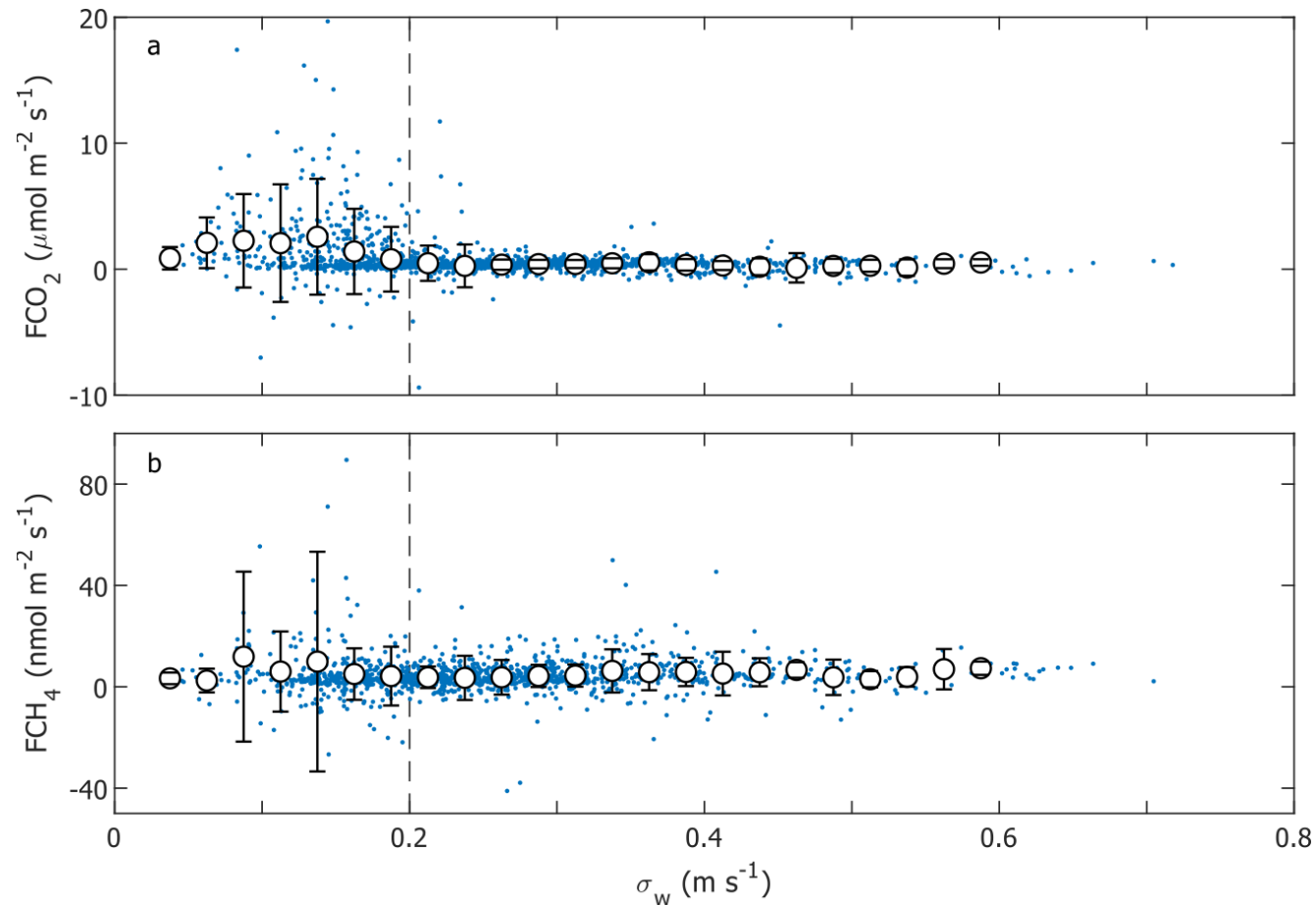
Platform



Eddy covariance measurements

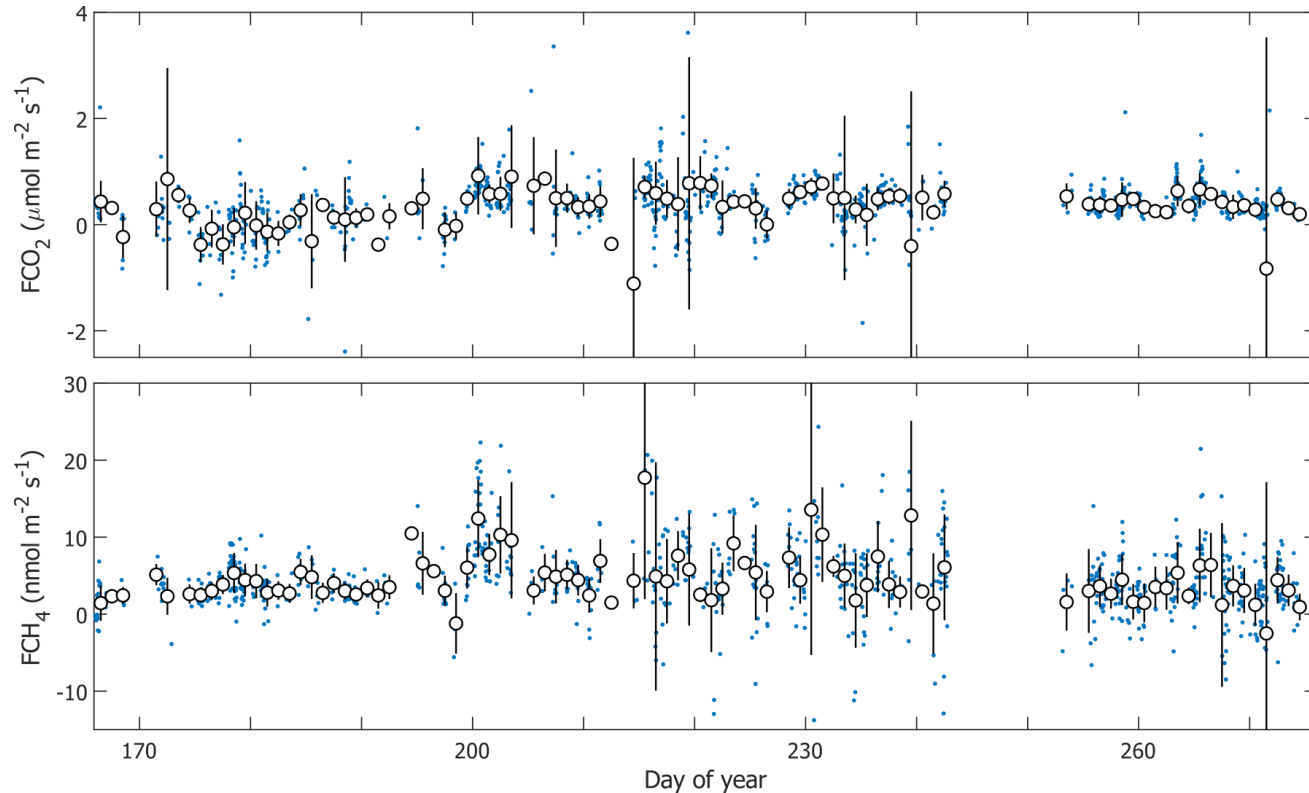
- METEK uSonic-3, Li-Cor LI7200RS (enclosed-path)
- Normal data processing workflow
- Data screening: skewness & kurtosis of w and c , flux stationarity, minimum σ_w threshold, wind direction using footprint analysis (Kljun et al. 2014)
- 27 % of CO₂ fluxes and 23 % of CH₄ fluxes were retained after data screening
 - σ_w threshold and wind direction most prominent

σ_w filtering



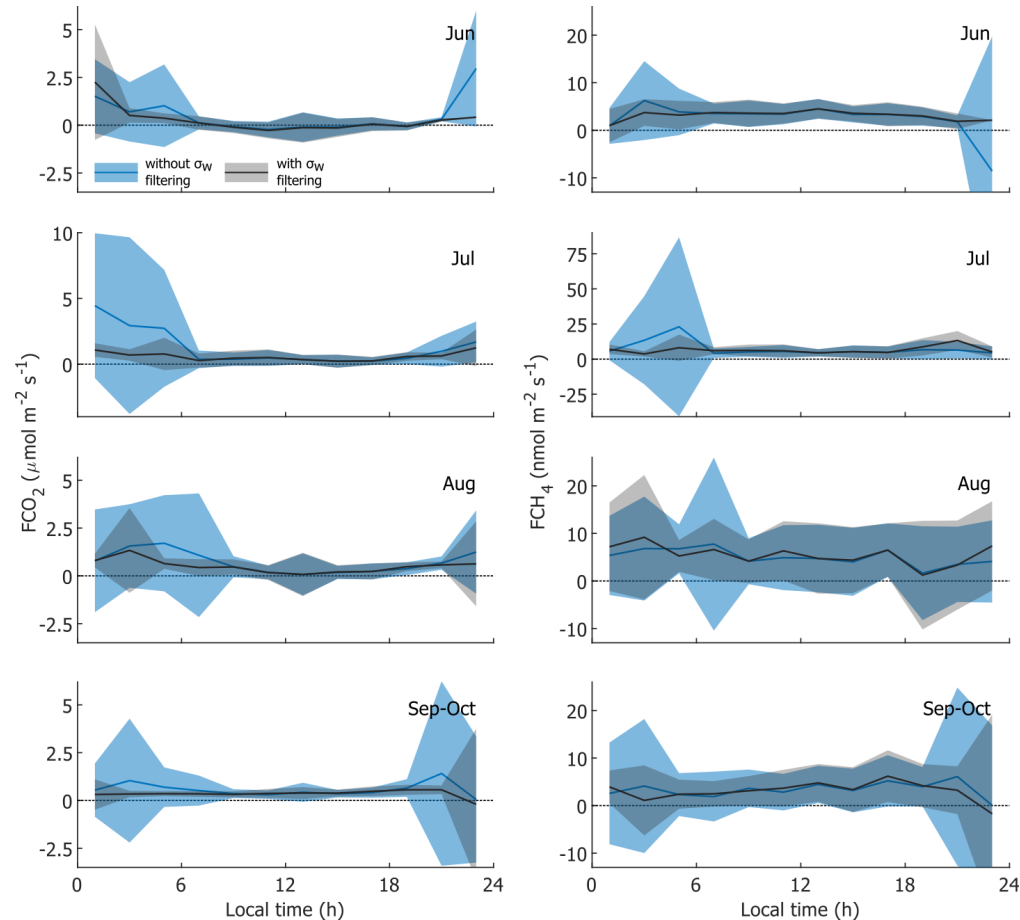
- σ_w threshold at where the variability becomes independent on σ_w
- Same threshold for both FCO_2 and FCH_4

CO₂ and CH₄ fluxes and their variability



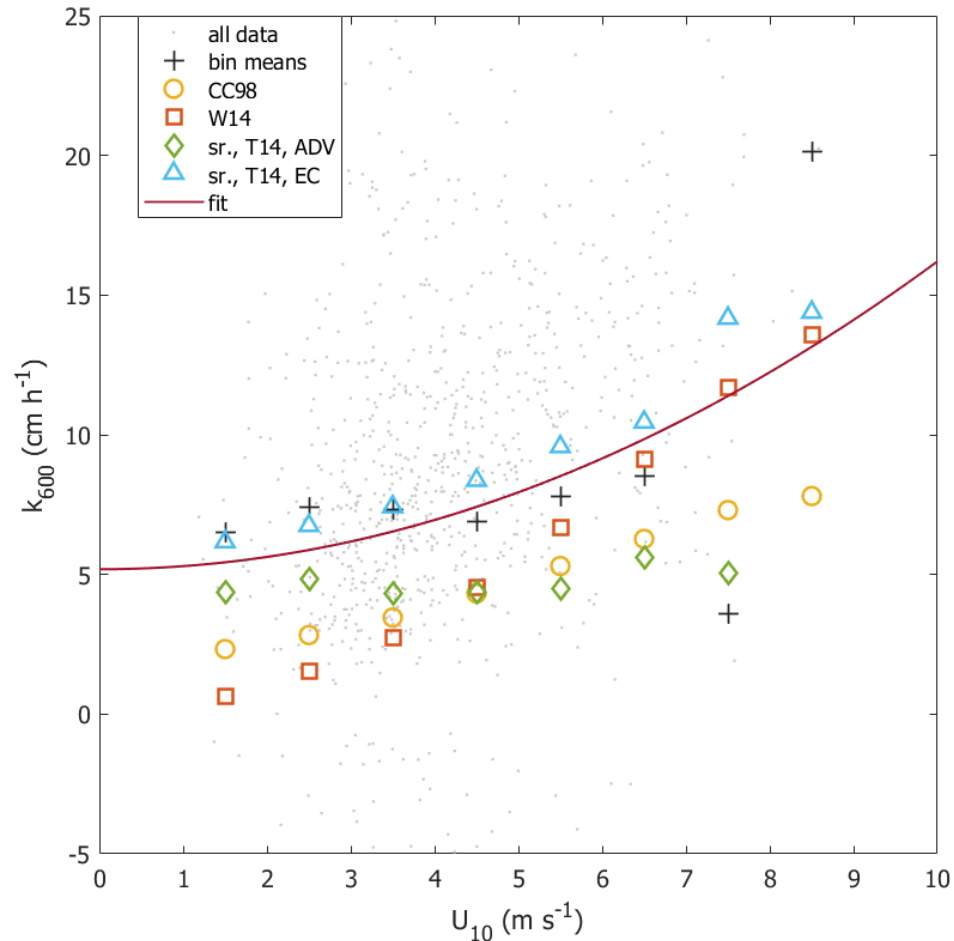
- Fluxes were generally small and relative flux variability large
- Highest FCO_2 (0.49 ± 0.98 $\mu\text{mol m}^{-2} \text{s}^{-1}$) and FCH_4 (5.5 ± 7.9 $\text{nmol m}^{-2} \text{s}^{-1}$) in August
- Occasional negative FCO_2 in June opposite to the measured ΔpCO_2

Diurnal cycle in the fluxes and the nighttime flux problem



- Nighttime CO_2 fluxes were higher, large variability in all fluxes
- σ_w filtering decreases the FCO_2 difference: suggests that the large nocturnal fluxes do not represent the surface exchange
- However, data coverage only 10–15 % during night
- Negative CO_2 fluxes in daytime in June

Gas transfer velocity and wind speed



- Models:

- Cole & Caraco (1998): $k_{600} = (2.07 + 0.215U_{10}^{1.7})\left(\frac{Sc}{600}\right)^{-0.5}$

- Wanninkhof (2014): $k_{600} = 0.251U_{10}^2\left(\frac{Sc}{600}\right)^{-0.5}$

- Zappa et al. (2007) (surface renewal): $k_{600} = c(\epsilon\nu)^{1/4}Sc^{-1/2}$

- Line fit: $k_{600} = 0.11 \cdot U_{10}^2 + 5.2$

- Non-zero intercept is required

- Buoyancy flux is required (also Guseva et al. 2021: often dominant during low wind)

Conclusions

- EC measurements can and should be conducted on rivers but data could be scarce
- Continuous measurements are needed to capture nocturnal fluxes
- The effect of the buoyancy flux on the gas transfer cannot be neglected



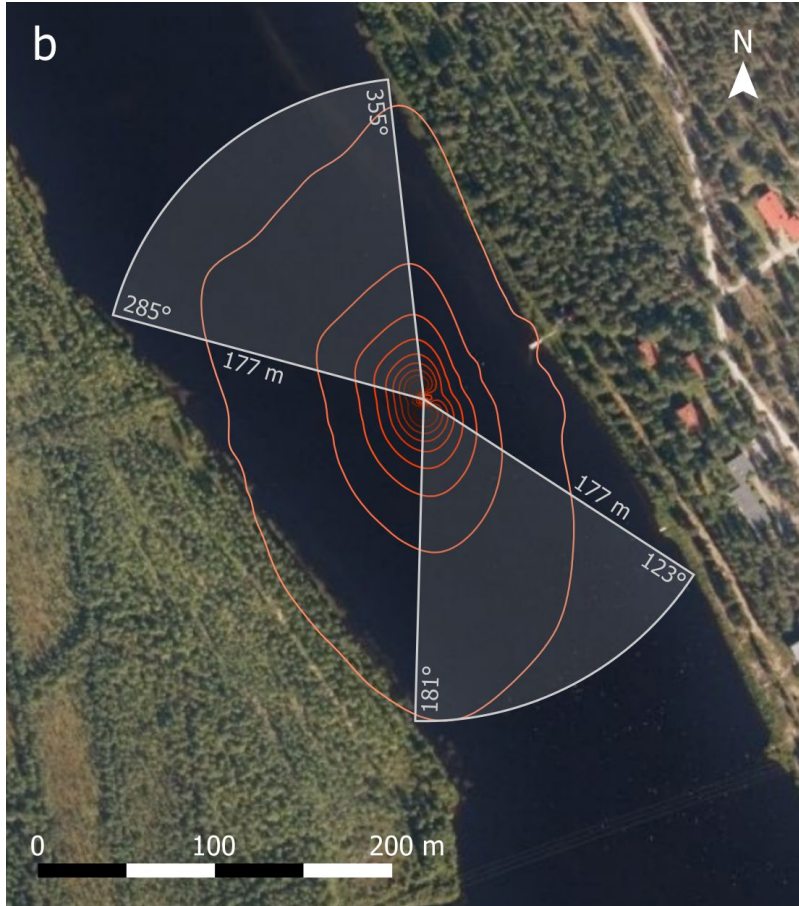
References

- Cole, J. J. and Caraco, N. F.: Atmospheric exchange of carbon dioxide in a low-wind oligotrophic lake measured by the addition of SF₆, *Limnol. Oceanogr.*, 43, 647–656, 1998.
- Guseva, S. , Aurela, M., Cortés, A., Kivi, R., Lotsari, E., MacIntyre, S., Mammarella, I., Ojala, A., Stepanenko, V. , Uotila, P., Vähä, A., Vesala, T., Wallin, M. B., Lorke, A. (2021): Variable physical drivers of near surface turbulence in a regulated river , *Water Resources Research* 57, e2020WR027939.
- Huotari, J., S. Haapanala, J. Pumpanen, T. Vesala & A. Ojala (2013). Efficient gas exchange between a boreal river and the atmosphere. *Geophysical Research Letters*, 40(21), 5683–5686, doi: 10.1002/2013GL057705.
- Kljun, N., Calanca, P., Rotach, M. W., Schmid, H. P. (2015): A simple two-dimensional parameterisation for Flux Footprint Prediction (FFP), *Geosci. Model Dev.*, 8, 3695–3713, <https://doi.org/doi:10.5194/gmd-8-3695-2015>.
- Tedford, E. W., MacIntyre, S., Miller, S. D., and Czikowsky, M. J. (2014): Similarity scaling of turbulence in a temperate lake during fall cooling, *J. Geophys. Res.-Oceans*, 119, 4689–4713, <https://doi.org/10.1002/2014JC010135>.
- Wanninkhof, R. (2014): Relationship between wind speed and gas exchange over the ocean revisited, *Limnol. Oceanogr.: Methods* 12, 2014, 351–362, <https://doi.org/10.4319/lom.2014.12.351>.
- Zappa C. J., McGillis, W. R., Raymond, P. A., Edson, J. B., Hintsä, E. J., Zemmelenk, H. J., Dacey, John W. H., Ho, D. T. (2007): Environmental turbulent mixing controls on air-water gas exchange in marine and aquatic systems, *Geophysical Research Letters* 34, L10601, doi:10.1029/2006GL028790.

Thank you! Questions?



Extra: footprint analysis



- Kljun et al. (2015) footprint model
- Footprint underestimated at the river bank directions
- Accepted wind sectors where the maximum distance to 90 % line (177 m) intersects the river banks